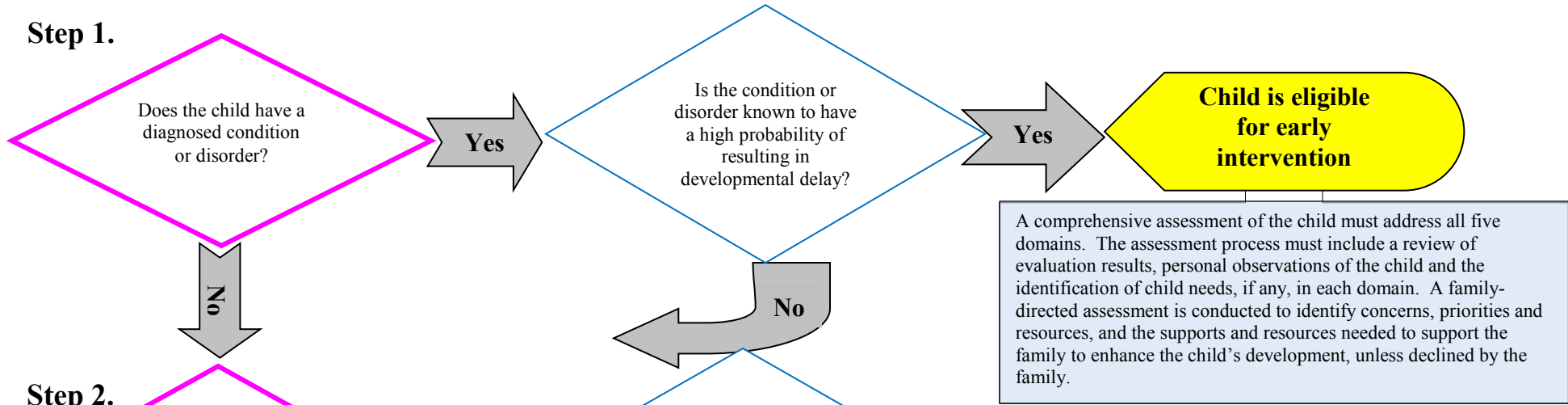


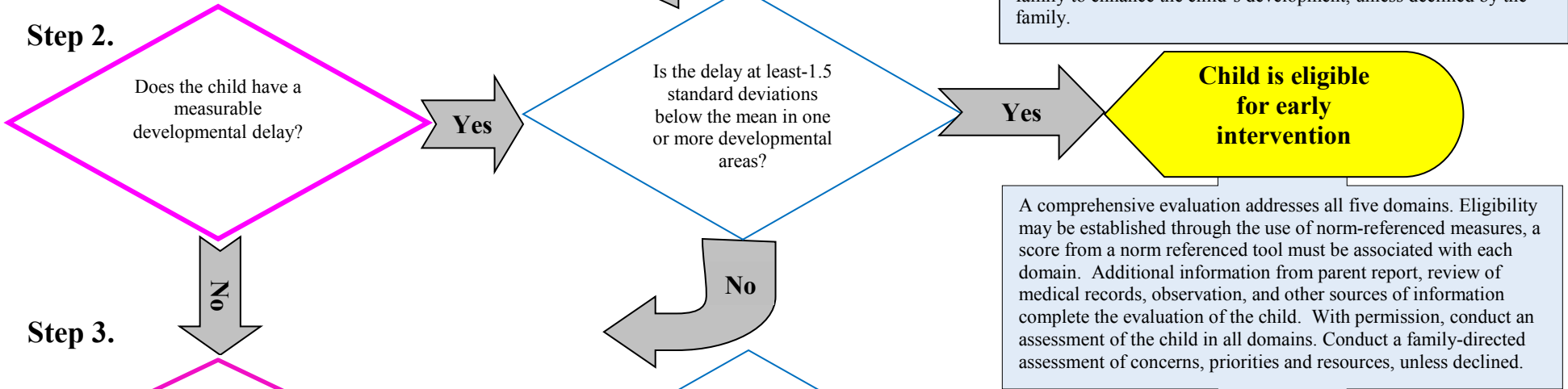
Part C. Eligibility Determination Flowchart

(Accessible document is found below this flow chart)

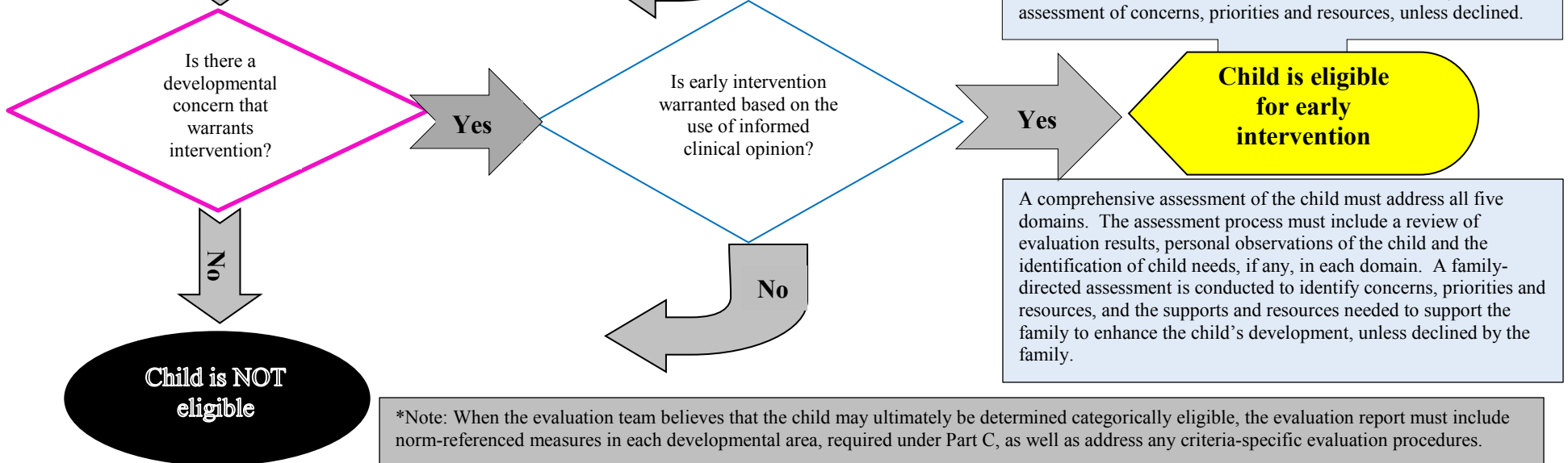
Step 1.



Step 2.



Step 3.



*Note: When the evaluation team believes that the child may ultimately be determined categorically eligible, the evaluation report must include norm-referenced measures in each developmental area, required under Part C, as well as address any criteria-specific evaluation procedures.

Part C. Eligibility Determination Flowchart

Step One: Does the child have a diagnosed condition or disorder?

- 1) If yes, is the condition or disorder known to have a high probability of resulting in developmental delay?
 - a. If yes, the child is eligible for early intervention and the team must complete a comprehensive assessment of the child in all five domains. The assessment process must include a review of evaluation results, personal observations of the child and the identification of child needs, if any, in each domain. A family-directed assessment is conducted to identify concerns, priorities and resources, and the supports and resources needed to support the family to enhance the child's development, unless declined by the family.
- 2) If no, answer next question.

Step Two: Does the child have a measurable developmental delay?

- 1) If yes, is the delay at least -1.5 standard deviations below the mean in one or more developmental areas?
 - a. If yes, the child is eligible for early intervention based on comprehensive evaluations that address all five domains. Eligibility may be established through the use of norm-referenced measures, a score from a norm referenced tool must be associated with each domain. Additional information from parent report, review of medical records, observation, and other sources of information complete the evaluation of the child. With permission, conduct an assessment of the child in all five domains. The assessment process must include a review of evaluation results, personal observations of the child and the identification of child needs, if any, in each domain. A family-directed assessment is conducted to identify concerns, priorities and resources, and the supports and resources needed to support the family to enhance the child's development, unless declined by the family.
- 2) If no, answer next question.

Step Three: Is there a developmental concern that warrants intervention?

- 1) If yes, even though evaluation data does not indicate eligibility, is early intervention warranted based on the use of informed clinical opinion?
 - a. If yes, the child is eligible for early intervention and the team must complete a comprehensive assessment of the child in all five domains. The assessment process must include a review of evaluation results, personal observations of the child and the identification of child needs, if

any, in each domain. A family-directed assessment is conducted to identify concerns, priorities and resources and the supports and resources needed to support the family to enhance the child's development, unless declined by the family.

2) If no, the child is **not** eligible for early intervention.

Please note: When the evaluation team believes that the child may ultimately be determined categorically eligible, the evaluation report must include norm-referenced measures in each developmental area, required under Part C, as well as address any criteria-specific evaluation procedures related to the categorical eligibility.